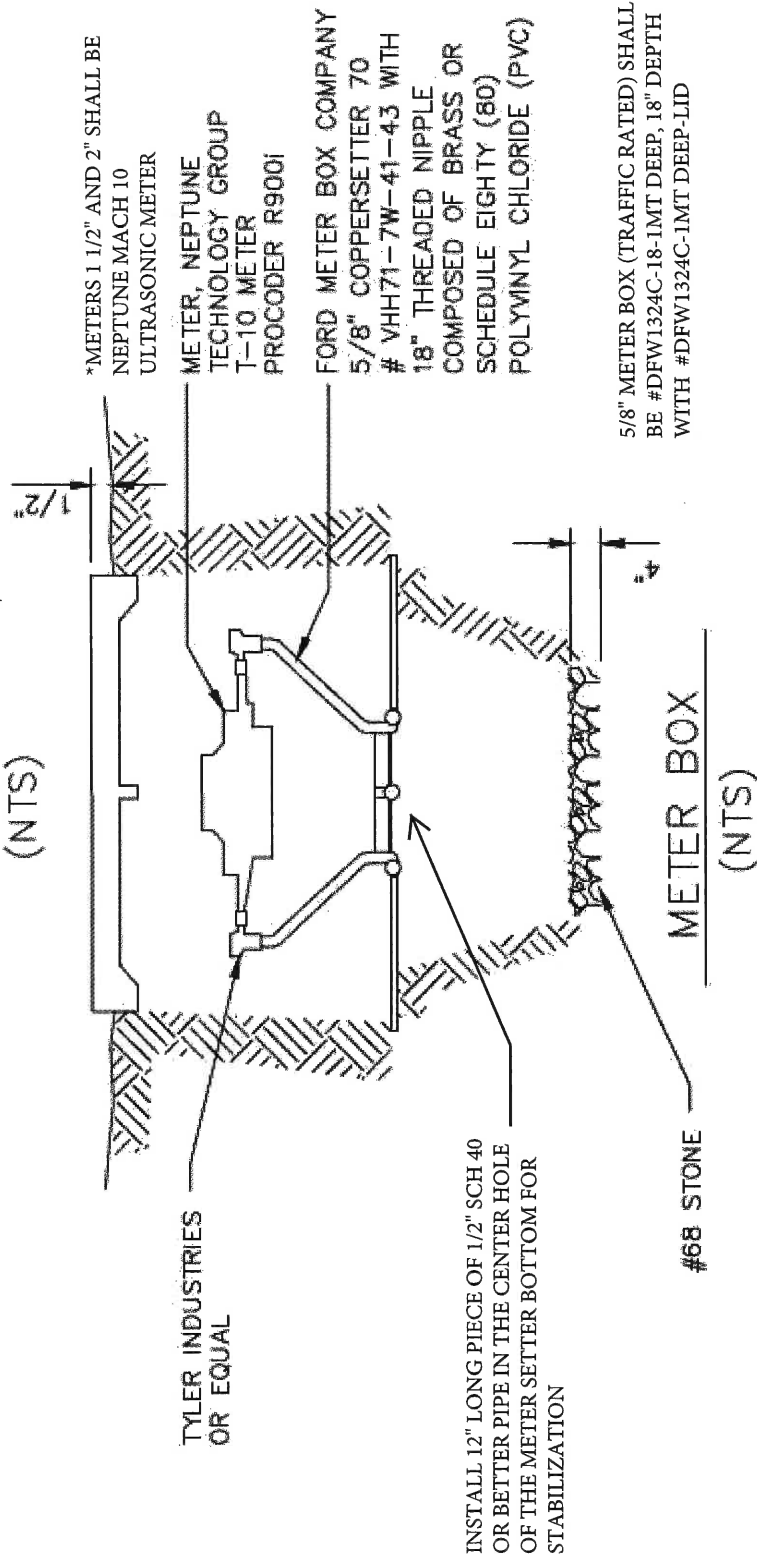


NOTE: THE WATER SUPPLY LINES FROM THE WATER MAIN TO THE WATER METERS SHALL BE OF TWO-INCH (2") OR LESS IN DIAMETER MUNICIPEX PIPE, WITH TEN (10) GAUGE TRACER WIRE.

SERVICE CONNECTION

(NTS)



NOTE; THE COPPERSETTER MUST BE CONTAINED IN AN EIGHTEEN INCH (18") CARSON METER BOX (ITEM NUMBER 1520). AN EPOXY-COATED SERVICE SADDLE WITH "CC" THREADS AND STAINLESS STEEL STRAPS MUST BE USED. MUNICIPEX PIPE TWO INCHES (2") OR LESS IN DIAMETER, WITH TEN (10) GAUGE TRACER WIRE.

ADDITIONAL ACCESSORIES

WATER METER FRAME AND COVER SHALL BE A. Y. McDONALD MFG. #74MDLNLRG

WATER METER SHALL BE 5/8" NEPTUNE TECHNOLOGY GROUP MODEL T-10 PROCODER R900I

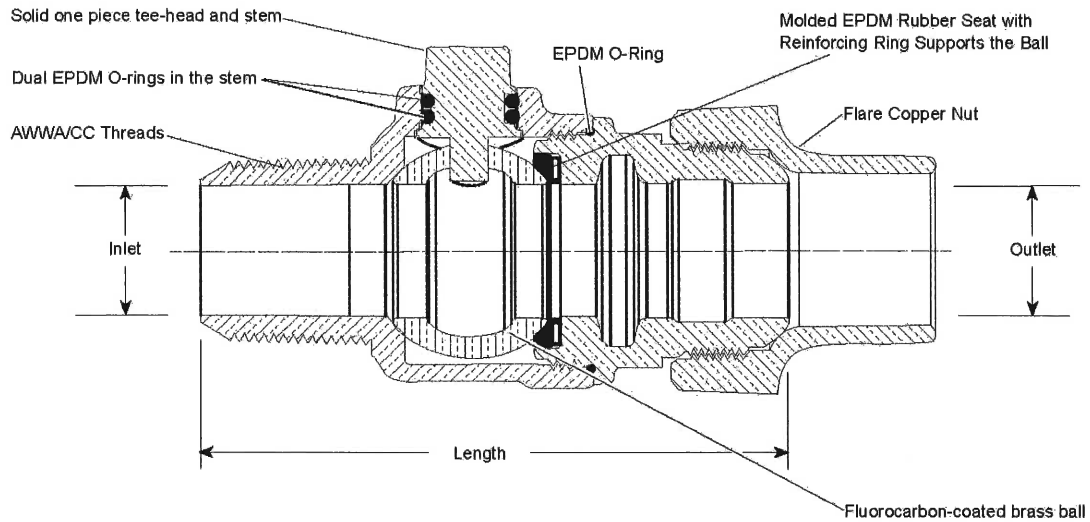
CORPORATION STOPS SHALL BE 1" BALL CORPORATION STOP PART #FB600-4-NL BY THE FORD METER BOX COMPANY, INC. CONTRACTOR SHALL USE SWIVEL EIGHT BEND PART #LA04-44S-NL BY THE FORD METER BOX COMPANY

W-8

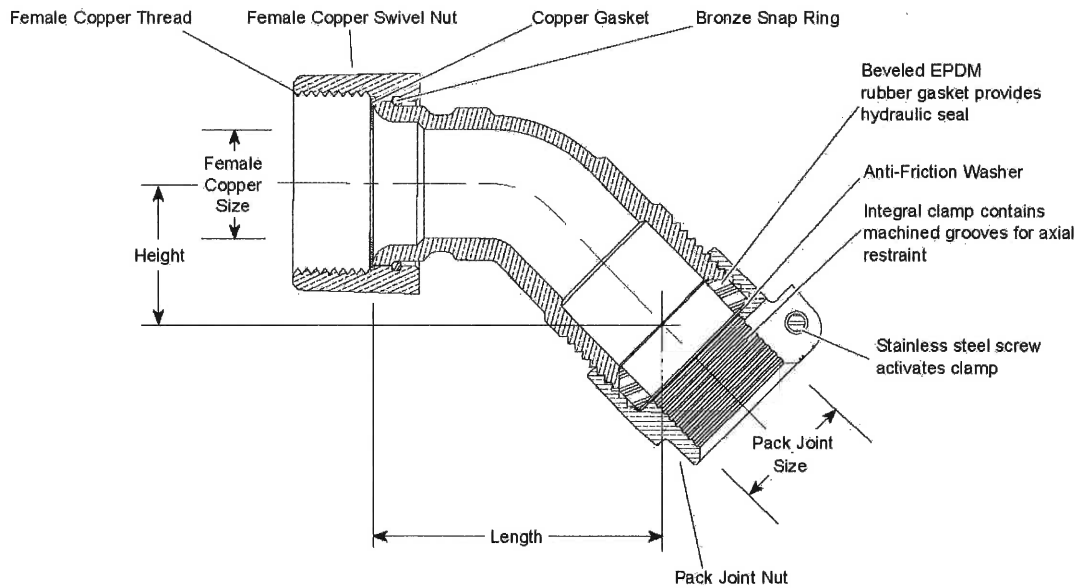
TOWN OF SMITHFIELD, VA

WATERWORKS DETAILS

AWWA/CC TAPER THREAD INLET BY FLARE COPPER OUTLET



BALLCORP CORPORATION STOP
(FB600-x-NL style)
FORD METER BOX COMPANY



SWIVEL EIGHTH BEND
(LA04-xxS-NL style)
FORD METER BOX COMPANY



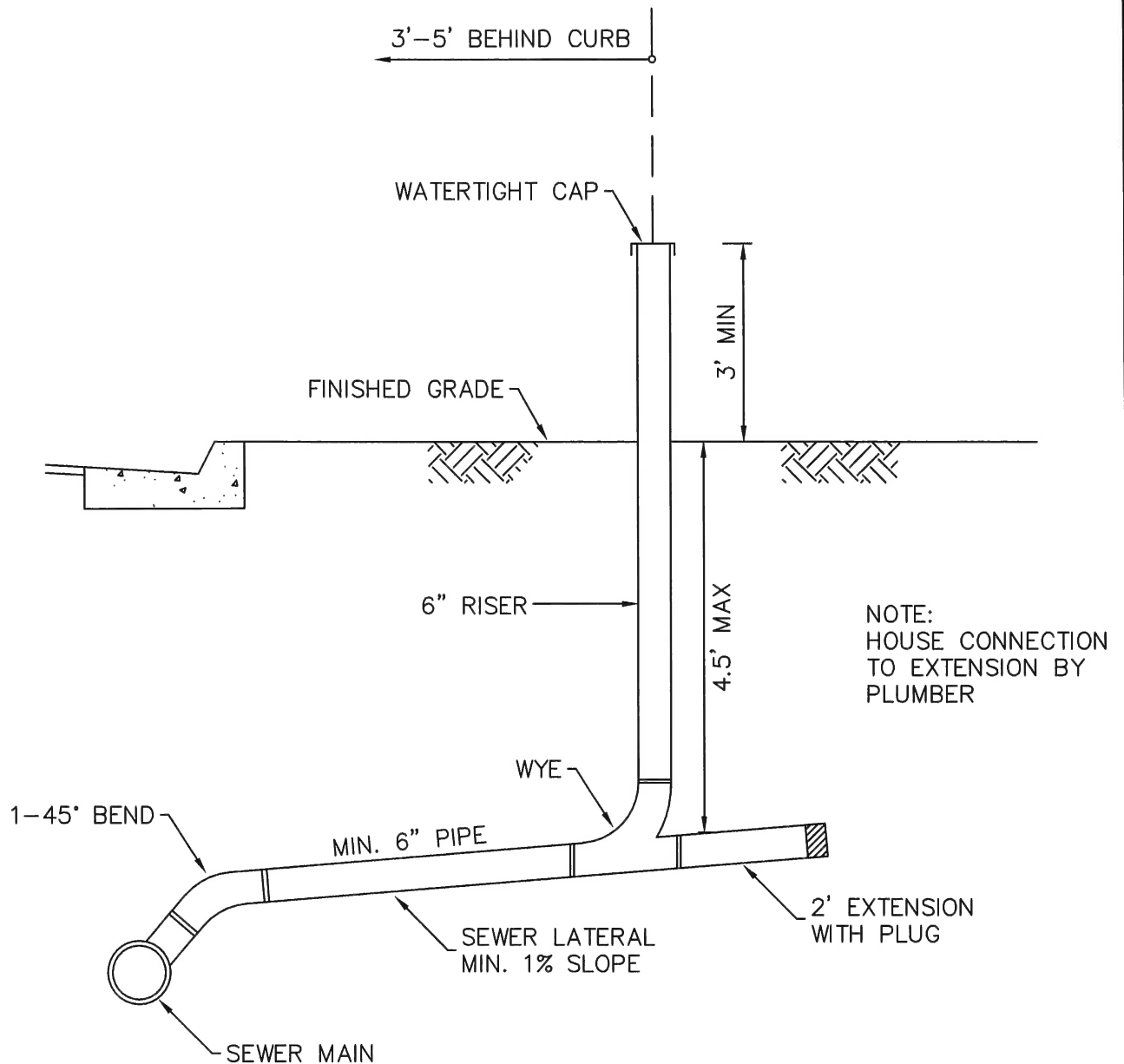
TOWN OF SMITHFIELD
DESIGN AND CONSTRUCTION STANDARDS

CORPORATION STOP AND
SWIVEL EIGHTH BEND

DWG #: W-8A


SCALE: NTS

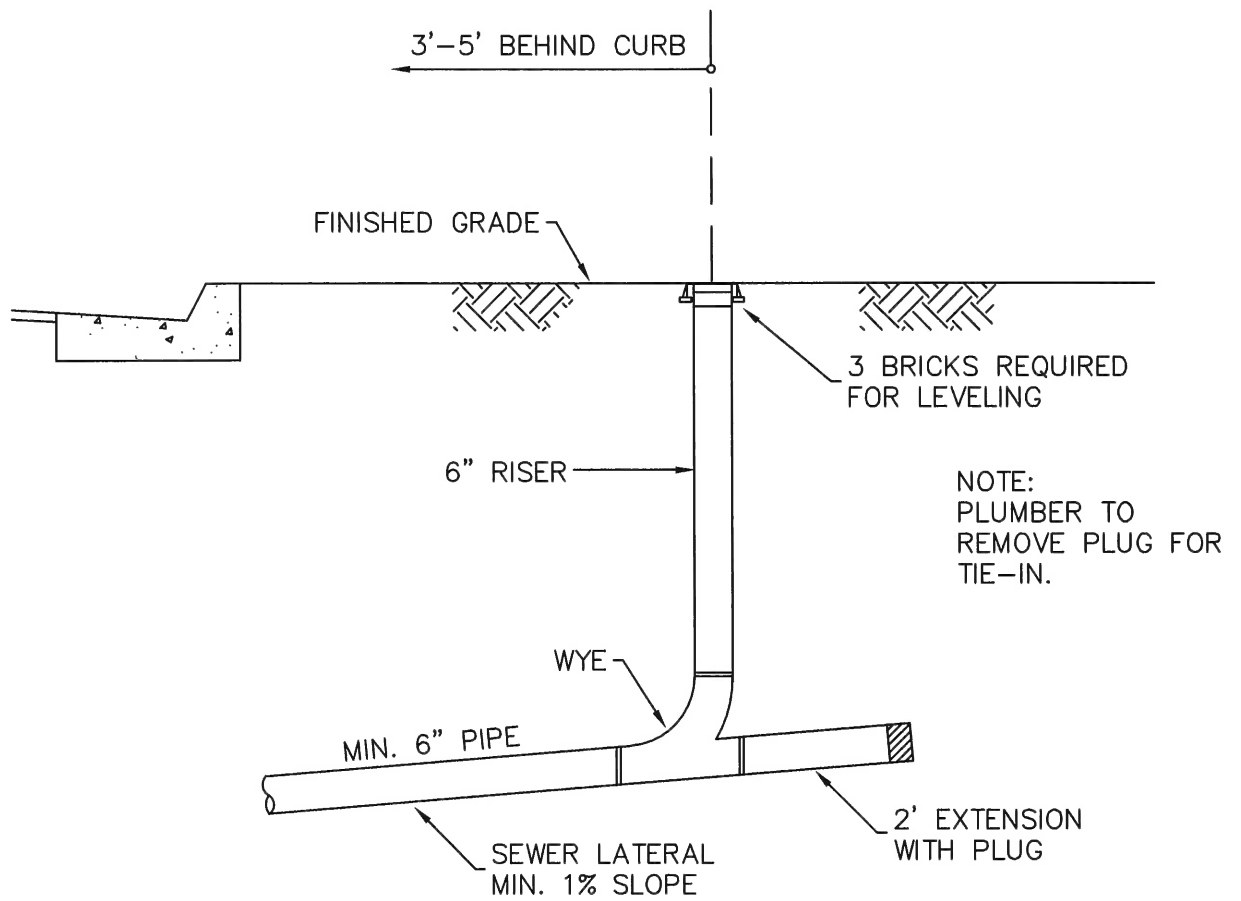
NOV 2022



NOTES:

1. BEDDING REQUIREMENT SAME AS SEWER MAIN
2. CLEAN OUT SHALL BE LOCATED 3- FEET TO 5- FEET BEHIND CURB
3. MAXIMUM ALLOWABLE DEPTH OF LATERAL UNDER THE CURB IS 5- FEET. MAXIMUM ALLOWABLE DEPTH OF LATERAL AT THE CLEAN OUT IS 4.5- FEET.
4. SEWER SADDLES SHALL BE ROMAC STYLE CB UNLESS OTHERWISE APPROVED BY PUBLIC WORKS.
5. FOR DUCTILE IRON LATERALS, A TEMPORARY FERNCO FLEXIBLE CAP WITH BAND SHALL BE USED DURING CONSTRUCTION AND TESTING.
6. FOR PVC LATERALS, A TEMPORARY GLUE CAP SHALL BE USED DURING CONSTRUCTION AND TESTING.
7. NO MECHANICAL GRIPPER PLUGS SHALL BE USED.

 TOWN OF SMITHFIELD DESIGN AND CONSTRUCTION STANDARDS	
SEWER LATERAL BY DEVELOPER	
DWG #: S-1	SCALE: NTS
	NOV 2022



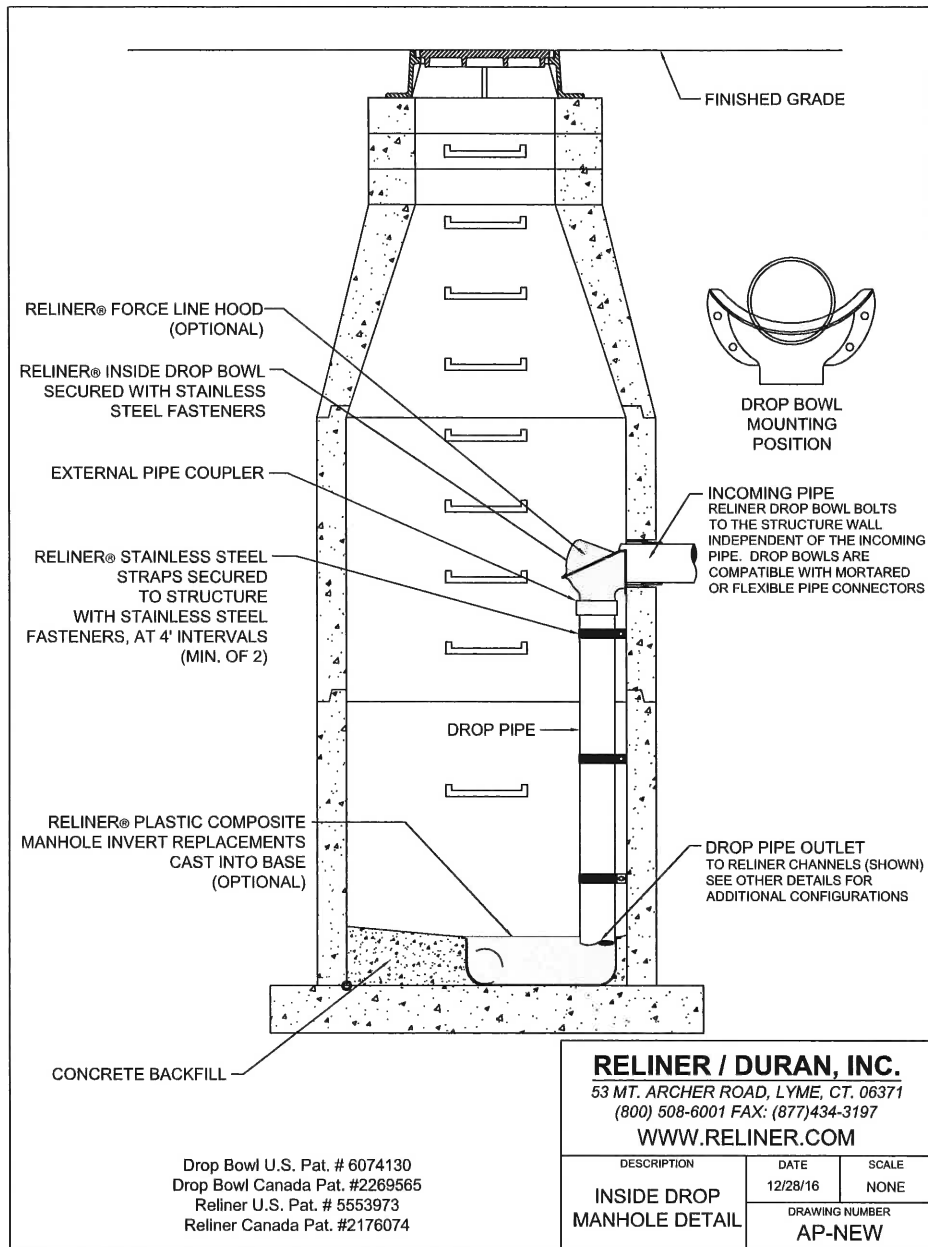
TOWN OF SMITHFIELD
DESIGN AND CONSTRUCTION STANDARDS

SEWER LATERAL BY PLUMBER

DWG #: S-2


SCALE: NTS

NOV 2022



NOTES:

1. INTERIOR DROP TO BE USED IN NEW AND EXISTING MANHOLES.
2. SOLVENT WELD JOINTS ON ALL PIPING AND FITTINGS
3. MAINLINE TO PVC DROP CONNECTION SHALL BE MADE WITH APPROVED COUPLING.
4. LOCATION OF DROP CONNECTION SHALL NOT CONFLICT WITH THE LOCATION OF THE MANHOLE STEPS.
5. BOTTOM BEND TO BE AT 45 DEGREES WITH RESPECT TO THE DOWNSTREAM FLOW.
6. PRECAST CONCRETE MANHOLE TO BE IN COMPLIANCE WITH ASTM C-478.
7. INTERIOR DROP SHALL BE NO MORE THAN 6 INCHES FROM MANHOLE WALL.
8. ALL PVC PIPE AND FITTINGS SHALL BE SCHEDULE 40.
9. RIM AND LID SHALL BE CENTERED OVER THE MANHOLE
10. INSIDE DROP PIPE SHALL EXTEND TO INVERT AND TURN TOWARD THE DIRECTION OF FLOW

	TOWN OF SMITHFIELD DESIGN AND CONSTRUCTION STANDARDS	
	SANITARY SEWER INTERIOR DROP MANHOLE	
DWG #: S-3	SCALE: NTS	
	AUG 2017	

PROVIDE INSULATED BARRIER TYPE TERMINAL STRIPS WITH SOLDERLESS BOX LUGS IN TOP SECTION FOR CONNECTING CONDUCTORS IN CORDS FROM PUMPS AND FLOAT SWITCHES TO CONDUCTORS IN CONDUIT FROM CONTROL PANEL. PROVIDE BARE COPPER GROUND BUS BONDED TO BOX WITH DRILLED AND TAPPED HOLES FOR 1/4" BRASS MACHINE SCREWS FOR CONNECTING ALL EQUIPMENT GROUND CONDUCTORS.

PROVIDE EIGHT STRAIGHT MALE-TREAD, CORD CONNECTORS WITH SEALING GASKETS AND LOCK NUTS (CROUSE-HINDS CGB-SG SERIES OR EQUAL) INDIVIDUAL PLATE. FOUR SHALL BE 1/2" CONDUIT SIZE, TWO 1" CONDUIT SIZE. PROVIDE NOBPRENE BUSHINGS IN CONNECTORS TO MATCH SIZES OF CORDS FROM PUMPS & FLOAT SWITCHES

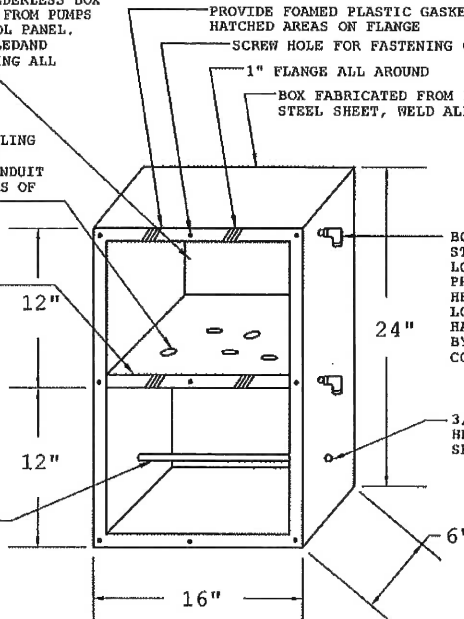
16 GAUGE STAINLESS STEEL DIVIDER PLATE WITH 1" TURNED-UP FLANGE AT FRONT. SECURE WITH CONTINUOUS WELD ALL AROUND

1/2" DIA. STAINLESS STEEL ROD FOR SUPPORT OF STAINLESS STEEL BASKET-WEAVE CORD GRIPS ON EACH CORD FROM A PUMP OR A FLOAT SWITCH. DRILL AND TAP EACH END FOR MACHINE SCREWS

PROVIDE FOAMED PLASTIC GASKET ON HATCHED AREAS ON FLANGE
SCREW HOLE FOR FASTENING COVER (TYP.)
1" FLANGE ALL AROUND
BOX FABRICATED FROM 16 GAUGE STAINLESS STEEL SHEET, WELD ALL JOINTS AND CORNERS

BOX VENT 3/4" STAINLESS STEEL STREET ELBOW WITH LOCKNUT ON INSIDE OF BOX. PROVIDE BRONZE INSECT SCREEN HELD IN PLACE BY CLOSE NIPPLE. LOCATE VENTS ON LEFT OR RIGHT HAND SIDE OF BOX AS REQUIRED BY SPECIFIC PUMPING STATION CONDITIONS (TYP.)

3/16" STAINLESS STEEL FLAT HEAD MACHINE SCREW FOR SECURING ROD TO BOX (TYP.)



NOTES:

1. THE TERMINAL BOXES WILL BE FURNISHED BY THE OWNER. CONTRACTOR RESPONSIBLE FOR INSTALLATION, CONNECTORS, TERMINALSTRIPS, WIRING, ETC. FOR A COMPLETE FUNCTIONAL INSTALLATION.
2. PROVIDE SINGLE 16 GAUGE STAINLESS STEEL COVER PLATE (NOT SHOWN) FOR BOX SECURED TO FLANGES WITH TEN 1/8" FLAT HEAD STAINLESS STEEL SELF TAPPING SCREWS.
3. SECURE BOX TO CONCRETE PUMP CHAMBER TOP WITH FOUR 3/8" STAINLESS STEEL LAG BOLTS SET IN EXPANSION ANCHORS IN THE CONCRETE. SECURE TO STEEL PUMP CHAMBER TOP WITH FOUR 3/8" STAINLESS STEEL MACHINE BOLTS WITH NUTS, FLAT WASHERS AND LOCK WASHERS, DRILL HOLES IN STEEL TOP FOR SCREWS. REINFORCE BOTTOM FLANGES OF TERMINAL BOX WITH 1/8"x1"x12" FLAT STAINLESS STEEL BARS WHERE LAG BOLTS OR MACHINE BOLTS ARE LOCATED.



TOWN OF SMITHFIELD
DESIGN AND CONSTRUCTION STANDARDS

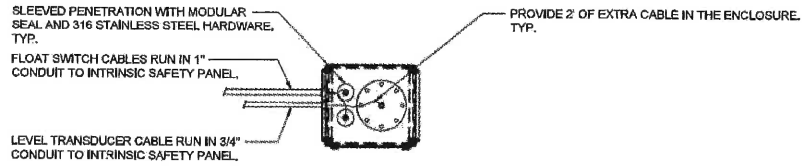
JUNCTION BOX DETAIL

DWG #: S-5

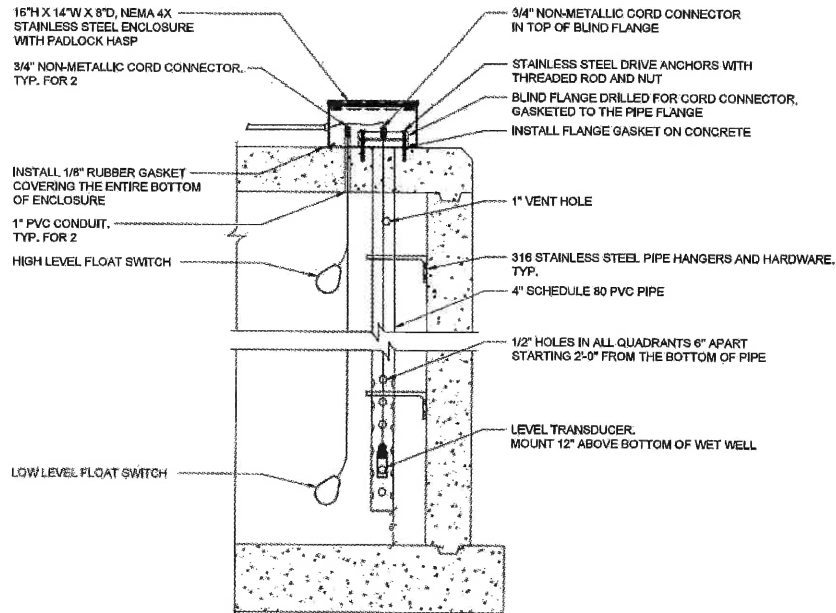
SCALE: N.T.S.

DWN BY: TOWN

03/06/06



PLAN VIEW



WET WELL INSTRUMENTATION
INSTALLATION DETAIL

NO SCALE



TOWN OF SMITHFIELD
DESIGN AND CONSTRUCTION STANDARDS

WET WELL INSTRUMENTATION DETAIL

DWG #: S-6

SCALE: NTS

NOV 2022