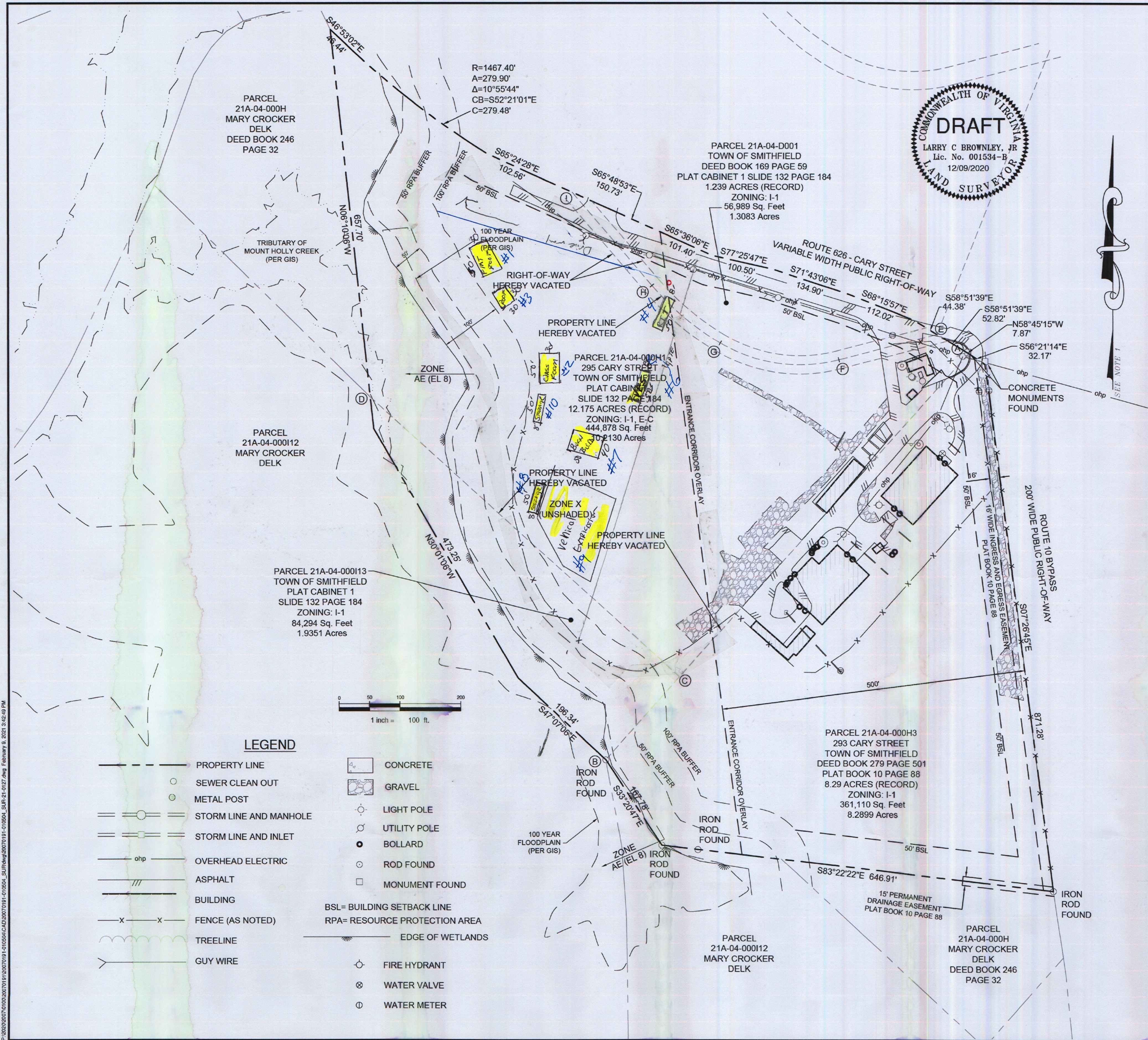






P:\2020\2070191\2070191-010504\2070191-010504\_S&R-24-0127.dwg February 8, 2021 3:42:49 PM



LOT CONSOLIDATION PLAT AND  
RIGHT-OF-WAY VACATION PLAT  
293 & 295 CARY STREET  
TOWN OF SMITHFIELD, VIRGINIA

**Draper Aden Associates**  
Engineering • Surveying • Environmental Services

2 BayPort Way, Suite 120  
Newport News, VA 23606  
757-599-9800 Fax: 757-599-3684  
www.daa.com

• Raleigh, NC  
• Richmond, VA  
• Fayetteville, NC  
• Blacksburg, VA  
• Northern Virginia  
• Charlottesville, VA  
• Virginia Beach, VA

REVISIONS	
DESIGNED BY:	
DRAWN BY:	ARS
CHECKED BY:	INITIALS
SCALE:	1" = 100'
DATE:	12/21/2020
PROJECT NUMBER:	20070191-010504
SHEET	
2 OF 2	

Smithfield Fire Dept  
Copy

- "Buildings"
- Building #1 on map: Flat Roof Prop  
Dimensions - 30FT BY 30FT
  - Building #2 on map: Classrooms  
Dimensions - 45FT BY 20FT
  - Building #3 on map: Pitch Roof Prop  
Dimensions - 30FT BY 30FT
  - Building #4 on map: RT/Manday Prop  
Dimensions - 45FT BY 10FT
  - Building #5 on map: Restrooms  
Dimensions - 40FT BY 40FT
  - Building #6 on map: VES Prop  
Dimensions - 45FT BY 10FT
  - Building #7 on map: Can Confidence Prop  
Dimensions - 45FT BY 30FT
  - Building #8 on map: Comm Storage  
Dimensions - 45FT BY 10FT
  - Area on map #9 - Vehicle Erection  
Dimensions - 100FT BY 100FT
  - Building #10 on map: Storage  
Dimensions 45FT BY 20FT Connex Box